



FALCO CUP 2022

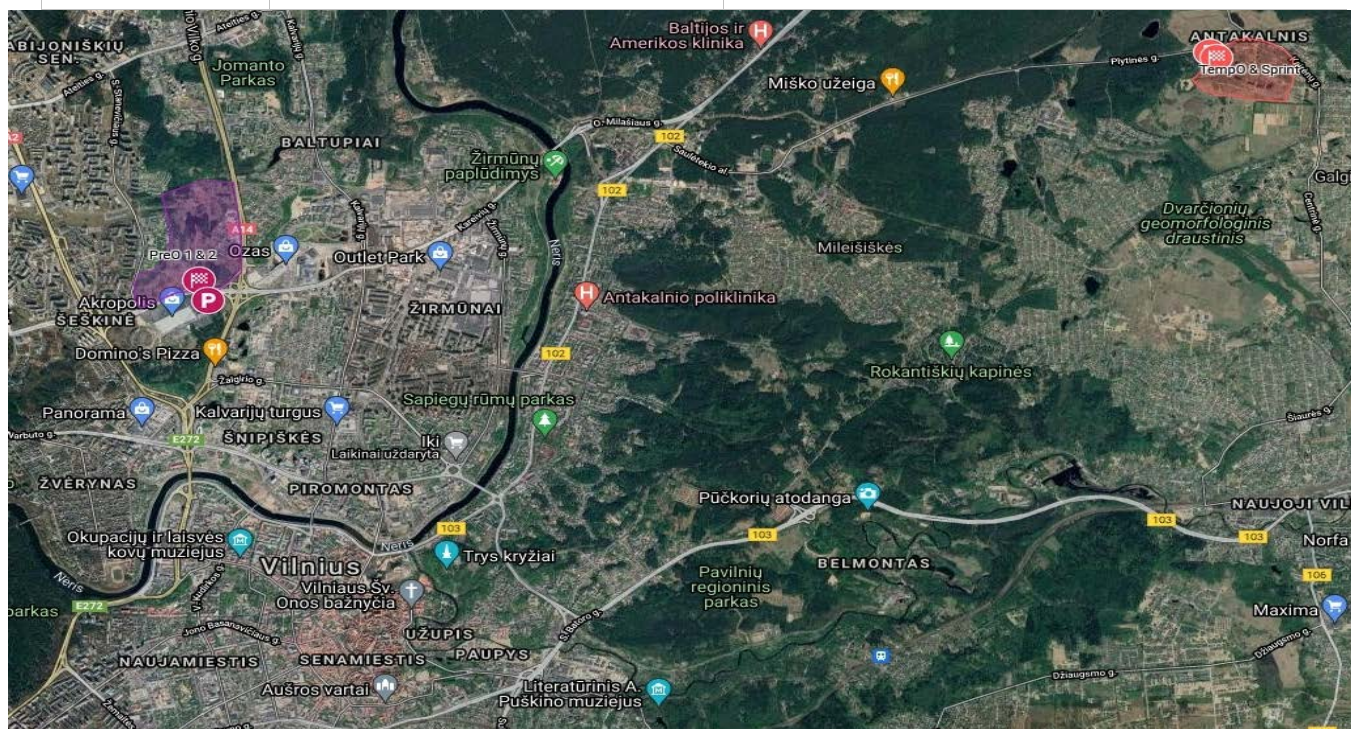
Bulletin 2

TRAIL ORIENTEERING
PreO1; TempO (WRE), PreO Sprint; PreO2 (WRE)
6-8 May, 2022, Vilnius, Lithuania



Event program

Time	Event	Place
May 6 (Friday), 2022		
14:30 – 16:30	Arrival, Registration	54.71387 25.26513 Few Parking for PhCh participants near EC, for others – “Akropolis” shopping mall parking area.
15:00 – 18:00	PreO1 course start period	
18:00 Foot O competitions https://drive.google.com/file/d/1ybawqHa7ZbL1t9reUj6kosePG4k070w0/view?fbclid=IwAR2PbeTFHntNOTJNa5J6RBU5B92YW2n01Pr_mwhWBMegR7YB298suZk0fSA		
May 7 (Saturday), 2022		
12:00 Foot O competitions https://drive.google.com/file/d/1ybawqHa7ZbL1t9reUj6kosePG4k070w0/view?fbclid=IwAR2PbeTFHntNOTJNa5J6RBU5B92YW2n01Pr_mwhWBMegR7YB298suZk0fSA		
10:30 – 12:00	Arrival, Registration	54.736297, 25.404029, Parkig area near EC.
13:00 – 16:00	TempO course start period, WRE	
14:00 – 17:00	PreO Sprint course start period	
May 8 (Sunday), 2022		
09:30 – 10:30 Foot O competitions https://drive.google.com/file/d/1ybawqHa7ZbL1t9reUj6kosePG4k070w0/view?fbclid=IwAR2PbeTFHntNOTJNa5J6RBU5B92YW2n01Pr_mwhWBMegR7YB298suZk0fSA		
10:30 – 12:00	Arrival, Registration	54.71387 25.26513 Few Parking for PhCh participants near EC, for others – “Akropolis” shopping mall parking area.
11:00 – 14:30	PreO2 course start period, WRE	
17:00	Prize giving and Closing ceremony	



<https://www.google.com/maps/d/u/0/edit?mid=1mcXItzMLVFHyqBmwnadS0RSF0i20Aruh&usp=sharing>

Classes

Results will be calculated in such classes:

Open (O); Physically challenged (P); Junior (J) – born 2002 and later.
All courses are the same for all classes.

Result calculation and prizes

Results will be available online

Total PreO courses results will be calculated as sum of 2 days PreO courses.

PreO Sprint course results will be calculated as number of right answers if equal - time spent in the course.

Total Falco Cup result will be calculated by the sum of appointed points for the place in each competition.

Place 1 2 3 4 5 6 7 8 9 10 11 12 13 14 15 16 17 18 19 20 21 22 23 24 25 26 27 28 29 30 31 32 33 34 35 36 37 38 39 40 next
Points 60 54 48 43 40 38 36 34 32 31 30 29 28 27 26 25 24 23 22 21 20 19 18 17 16 15 14 13 12 11 10 9 8 7 6 5 4 3 2 1 1

First 3 competitors in Total PreO and TempO and PreO Sprint courses and all classes will be awarded with event medals.

First 3 competitors in all Total Falco Cup classes will be awarded with event cups.

Registration and start fee

The registration to competitions that have WRE status is at Eventor:

[TempO course WRE](#)

[PreO2 course WRE](#)

Initially is presumed that all registered at WRE course will take part at all competitions. It will be great if you will give the information about your other starts by e-mail with Name, Surname, class and club (country) to: oskfalco@gmail.com or andrius.jovaisa@gmail.com

Course price (EUR)	up till May 1	
	Adult	Junior
PreO 1	10	5
PreO Sprint	10	5
TempO (WRE)	20	10
PreO 2 (WRE)	20	10
All courses:	60	30

Payment will be acceptable in cash at competition event center or by bank transfer (to be received up till 5th of May).

Start lists

Preliminary start list of first day will be published at 05 May.

Adjusted final start list of each day will be published a day before competition day. Competitors that will be late at their start point or with late registration will have the opportunity to start after published start list ends at free order.

BIB numbers

The competitions will be held without bibs. The numbers will be printed only on backup cards so please show them to referees before you arrive on any TC/TempO stations for faster and smoother operation

Assistants

Competitor's own assistants are permitted and welcomed.

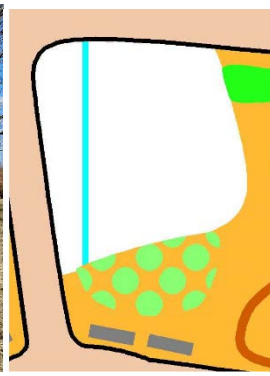
Paths will be of various quality, but all of them with hard surface. There will be some elevations and it will be few assistants at these points for those who will need.

Terrain and maps

Mainly open and semi-open terrain with middle sized landforms and lots of vegetation objects.

All PreO and SprintO maps: 1:3000, TempO maps: 1:4000, contour interval 2,0m, **ISSprOM-2019**. PreO1 and PreO2 - size A4, Sprint – size A5, waterproof, mapped at November 2021 - March 2022 by Andrius Jovaiša and Gintaras Mikolavičius. Latest laser scans (year 2020) is used in mapping process with contours 0.5m. All vegetation objects are precisely mapped.

TempO and SprintO maps will include mapped benches represented by gray symbol oriented to bench direction. See the sample.



As there are plenty of separate trees in terrain, there is a possibility that someone is missing in the map. I hope none. The symbol of prominent small tree (418) is used for a big variety of trees or bushes: starting 1,5m high tree. The symbol of prominent large tree (417) is used for really large and high tree. There are some tiny trees, so they can be detected hardly in some cases.

The competitions will be held in public areas with pedestrians and possible cyclists, so keep attention on the situation around you.

The map, backup card and solutions will be available only after the last competitor starts and they will be taken over by referees at finish.

Punching

ToePunch system will be used at **Pre01, Pre02 and Pre0 Sprint** competitions. In addition competitor will get a paper punching card at the start for backup punching which is not mandatory. Short instructions for ToePunch:

Each competitor will get a chipset in the start of Pre0, which contain the following chips: Info, A, B, C, D, E and Z. Before the start, competitor must clear all these tags in the clear/check-unit. At the start, competitor punches the info tag to the start unit. On the course, competitor punches with a tag marked with a letter to a unit assigned with the task number. At the finish, competitor will punch the Info tag using the finish unit. The chipset with stored data will be read with a mobile device that sends the punches to the server. The chipsets are not collected back from the competitors after Pre01 and the same should be used for Pre02 and Pre0 Sprint. Remember to take the chipset with you to all competitions. More information about the system: <http://toe.yq.cz/>

Result entering in Temp0 competitions will be organized with mobile devices using ANT software and will be duplicated to paper card.

Answer procedures:

We would like to save overall time spent on Time Controls so referees will optimize procedures on TCs. They only ask you to choose loose or bound maps. They will expect that competitors will speak answers. When somebody wants to show answers please inform them immediately after arriving on TCs. Referees will show you all six flags and immediately start measuring time after sentence "Time starts now".

Courses

Course parameters and distances:

Pre01: 800m, 26 controls, elevation 10m. 1 timed control before start with 3 tasks. Max time: 105min. Event center, start is at event center, finish is 0,5km from event center. The terrain, course planning and solutions will be quite similar as in Pre02, so it can serve as model for WRE.

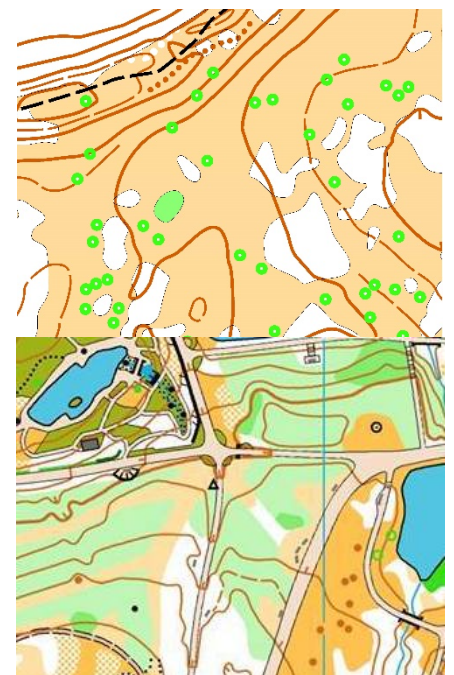
Pre02 WRE: 2 parts: 400m 10 controls, + 600m. 18 controls, elevation 35m. 2 timed controls: 1 before start, 1 after finish with 3 tasks at each. Max time: 115 min. in total.

In all Pre0 courses there is free order controls punching. Viewing points are situated along course in the controls number order.

Pre0 sprint: 450m. 18 controls, max time: 23min.

Temp0 WRE: 5 stations, with 5 tasks in each.

The event center is the same for Pre01 and Pre02. Event center for Temp0 is in different place, see the map. Pre0 Sprint course is straight afterwards Temp0 course.



In most cases decisions should be made by map reading. Sighting lines will be useful too as there will be many vegetation objects that can be used. We have done our best to map point features (trees and bushes) very precisely. Still it is possible that some of them are missed.

Mappers: Andrius Jovaiša, Gintaras Mikolavičius, **course setter:** Andrius Jovaiša
IOF Event Adviser: Zita Rukšane (Latvia).

Zero tolerance

Newly approved Guidance on zero problems will be used for Zero answers at all courses.

The guidance can be found here:

<https://onedrive.live.com/?authkey=%21AKttVYgKii2iyK4&cid=663580750D0C0BCE&id=663580750D0C0BCE%2147177&parId=663580750D0C0BCE%2118611&o=OneUp>

Zero answer is possible if the nearest flag is set at least **5 meters away from the correct position or another similar object is used**. For long distance solutions Zero tolerance will be reasonably more.

No Zero answers for flags on a point feature using wrong angle.

The same Zero tolerance rules will be used at all courses.

Jury:

Will be appointed later.

Toilet:

There will be wheelchair accessible toilets.

Entering Lithuania and Covid19 requirements:

You can check last travel restrictions and requirements here:

https://europa.eu/youreurope/citizens/travel/travel-and-covid/lithuania/index_en.htm

There are no any essential restrictions at the moment.

Our health strongly depends on your behavior during the competition. If you are ill or have a temperature - it is forbidden to participate in the competition. Please keep a safe distance during the competition. We will have disinfectant and disposable masks at the starting point. It is not obligatory to wear masks during the competition.

Event organizer:

OSK "Falco"

Melyniu str. 8, LT-53433, Vilemu k., Kauno raj., LITHUANIA; e-mail: oskfalco@gmail.com

Account : LT797044060007814548 **Bank:** AB SEB bankas, SWIFT: CBVILT2X; BIC: 70440

Person in charge: Andrius Jovaiša, Phone: +370 68788771, andrius.jovaisa@gmail.com