



FALCO CUP 2021

Bulletin

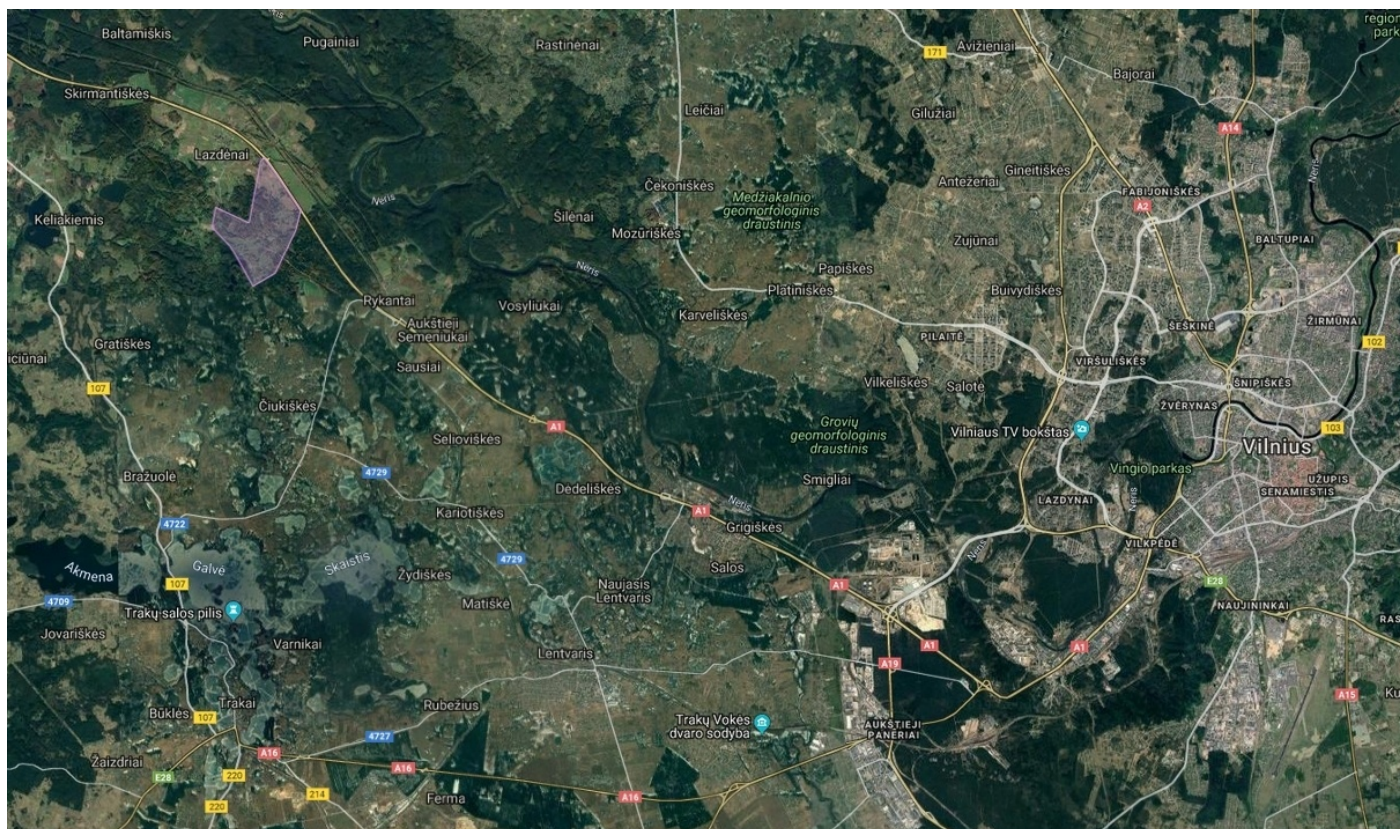
TRAIL ORIENTEERING
PreO1, PreO Sprint;
TempO (WRE)
PreO2 (WRE)



10 - 12 September, 2021, Rykantai, Lithuania

Event program

<i>Time</i>	<i>Event</i>	<i>Place</i>
September 10 (Friday), 2021		
15:30 – 17:30	Arrival, Registration	54.72518, 24.94418 Do not use the road crossing competition area. Check map link below.
16:00 – 18:00	PreO1 short course	
September 11 (Saturday), 2021		
09:30 – 11:00	Arrival, Registration	54.73884, 24.94422 Do not use the road crossing competition area. Check map link below.
10:00 – 12:00	PreO Sprint course	
14:00	FootO - Spring Cup Middle (WRE)	54.7225, 24.95164
14:30 – 17:00	Arrival, Registration	54.72518, 24.94418
15:00 – 17:00	TempO course WRE	
September 12 (Sunday), 2021		
08:30 – 11:00	Arrival, Registration	54.72876, 24.94705 Do not use the road crossing competition area. Check map link below.
09:00 – 12:00	PreO2 course WRE	
11:00	FootO - Spring Cup Long (WRE)	54.7225, 24.95164
15:00	Prize giving and Closing ceremony	



<https://www.google.com/maps/d/edit?mid=1uGk7pMhh4u9bOILb9KnOBJeN7ZZ9Vh98&usp=sharing>
Near Vilnius and Trakai, in close with Vilnius-Kaunas highway.

Please follow driving directions that are shown in Google map link. Be careful while driving: there is very uneven short road segment to main event center. The road segment crossing PreoSprint area will be open after this course ended and can be used on Saturday afternoon and Sunday (coming from Kaunas direction).

Classes

Results will be calculated in such classes:

Open (O); Physically challenged (P); Junior (J) – born 2001 and later.

All courses are the same for all classes.

Result calculation and prizes

Results will be available online at: <https://preoresultat.se/>

Total *PreO* courses results will be calculated as sum of 2 days PreO courses.

PreO Sprint course results will be calculated as ordinary PreO course and with time spent at course instead of Time controls. There will be time limit calculated 1min for each control plus 1min for each 100m. Minus 1 point for each up till second late at finish.

Total *Falco Cup* result will be calculated 3 best results: relay calculation + distance to winner; time/penalty time from time controls in PreO competitions are handled as normalized value between 0 and 60.

First 3 competitors in *Total PreO* and *TempO* and *PreO Sprint* courses and all classes will be awarded with event medals.

First 3 competitors in all *Total Falco Cup* classes will be awarded with event cups.

Registration and start fee

The registration to competitions that have WRE status is at Eventor:

[TempO course WRE](#)

[PreO2 course WRE](#)

It will be great if you will give the information about your other starts by e-mail with Name, Surname, class and club (country) to: oskfalco@gmail.com or andrius.jovaisa@gmail.com

Course price (EUR)	up till September 7	
	Adult	Junior
PreO 1	10	5
PreO Sprint	10	5
TempO (WRE)	15	7.50
PreO 2 (WRE)	15	7.50
All courses:	50	25

Payment will be acceptable in cash at competition event center or by bank transfer (to be received up till 7^h of September).

Start lists

Preliminary start list of first day will be published at 08 September.

Adjusted final start list of each day will be published a day before competition day. Competitors that will be late at their start point or with late registration will have the opportunity to start after published start list ends at free order.

If you are going to participate in foot orienteering competitions or in case other reason, please contact us directly for start list corrections (early or late start times).

Bib numbers will not be used. Please remember your number in case needed.

Assistants

There will be few assistants for those who will need. Paths can be of different quality, depends on weather condition. Though weather prognosis shows it to be good weather, but In case of rain paths can be not good for wheelchairs. There will be some elevations to overcome too. Competitor's own assistants are permitted and welcomed.

Terrain and maps

Mainly open and semi-open terrain with middle sized landforms and lots of vegetation objects.

All PreO maps: 1:3000, TempO maps: 1:4000 (change from previous bulletin), contour interval 2,5m, PreO2 - size A4, PreO1 and Sprint – size A5, waterproof, mapped at August-November 2019, carefully revised at July-August 2021 by Andrius Jovaiša. Laser scan contours (0.5m) is used in mapping process and will be visible at solution maps. Green and white on yellow are separated with tinny 0,01mm black line for better map reading. See samples below.

As there are plenty of separate trees in terrain, there is a possibility that someone is missing in the map. I hope none. The symbol of prominent small tree (418) is used for a big variety of trees or bushes: starting

1,5m high tree. The symbol of prominent large tree (417) is used for really large and high tree. There are some tiny trees, so they can be detected hardly in some cases.

Punching

Punching in **PreO1** and **PreO2** competitions: **the official punching system is manual punching**. Competitor will get a card at the start. In addition to that, electronic result system ToePunch will be used. Using it is voluntarily, but recommended, since it helps to get the results calculated faster.

Short instructions for ToePunch:

Each competitor will get a chipset in the start of PreO, which contain the following chips: Info, A, B, C, D, E and Z. Before the start, competitor must clear all these tags in the clear/check-unit. At the start, competitor punches the info tag to the start unit. On the course, competitor punches with a tag marked with a letter to a unit assigned with the task number. **You must remember to punch in the paper card, since it is the official system**. In the finish, competitor will punch the Info tag in the finish unit. The chipset with stored data will be read with a mobile device that sends the punches to the server. The chipsets are not collected back from the competitors after PreO1 and the same should be used for PreO2. Remember to take the chipset with you to PreO2 competition. More information about the system: <http://toe.yq.cz/>

Punching in **PreO Sprint** competitions will be organized with mobile devices that will be given to competitor at start using ANT software. We will have 15 devices, so only 15 competitors will be at course at one time.

Result entering in **TempO** competitions will be organized with mobile devices using ANT software and will be duplicated to paper card.

Courses

Course parameters and distances:

PreO1: 750m, 24 controls, elevation 25m, time limit: 95min. (100min for **PhCh** class). Event center, start and finish are in the same place, all controls are along the same route. 1 timed control after finish with 3 tasks. The terrain, course planning and solutions will be quite similar as in PreO2, so it can serve as model for WRE.

PreO2 WRE: 730m, 26 controls, elevation 35m, time limit: 100min. (110min for **PhCh** class). 1 timed control after finish with 3 tasks.

In all PreO courses there is free order controls punching. Viewing points are situated along course in the controls number order.

The event center is the same as PreO1 and TempO start place. Distance to start – 700m. It is allowed to get wheelchair users by car, but no parking at start place. The finish is nearby Kaunas-Vilnius highway. It is possible to pick up participants by car from finish to event center. We will have 9 seater adopted to carry wheelchair users and it will be used for transportation from finish to event center.

PreO sprint: 240m, 20 controls, elevation 20m (only A/Z answers), time limit: 23min. (26min for **PhCh** class).

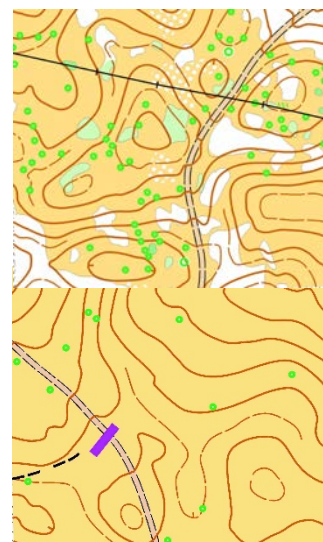
TempO WRE: 5 stations, with 6 tasks each, 670m, elevation 35m. The same road is used to go back after finish. Please do not disturb competitors while going back to event center.

Local field road is used in all courses with possible rare traffic. Keep your attention and be careful.

In most cases decisions should be made by map reading. Sighting lines will be useful too as there will be many vegetation objects that can be used. We have done our best to map point features (trees and bushes) very precisely. Still it is possible that some of them are missed.

Mapper and course setter: Andrius Jovaiša

IOF Event Adviser: Zita Rukšane (Latvia).



Zero tolerance

Zero answer is possible if the nearest flag is set at least **5 meters away from the correct position or another similar object is used**. For long distance solutions Zero tolerance will be reasonably more. If you see flag in long distance which is difficult to locate precise, but it is almost in same position – it

will not be “Z” answer, except there are other objects that can be used to determine it as “Z” or it can be solved from another position (in PreO courses).

No Zero answers for flags on a point feature using wrong angle .

The same Zero tolerance rules will be used at all courses.

Entering Lithuania and Covid19 requirements:

Lithuania is open for arrival from the EU and most other countries. You can check last restrictions here:

https://europa.eu/youreurope/citizens/travel/travel-and-covid/lithuania/index_en.htm

There is the exception for high level sport events (“Falco Cup 2021” has this status as included in the official IOF calendar) participants not to have isolation if it is needed upon general restrictions.

Our health strongly depends on your behavior during the competition. If you are ill or have a temperature - it is forbidden to participate in the competition. Please keep a safe distance during the competition. We will have disinfectant and disposable masks at the starting point. It is not obligatory to wear masks during the competition, but it is preferred.

Event organizer:

OSK “Falco”

Melyniu str. 8, LT-53433, Vilemu k., Kauno raj., LITHUANIA; e-mail: oskfalco@gmail.com

Account : LT797044060007814548 **Bank**: AB SEB bankas, SWIFT: CBVILT2X; BIC: 70440

Person in charge: Andrius Jovaiša, Phone: +370 68788771, andrius.jovaisa@gmail.com